

Hampton Lakes Retail Space For Lease

4041 N. Maize Road
Maize, KS

Building A
Suite 260 - 1,672 sq. ft.

Building B
1,500 - 11,522 sq. ft.

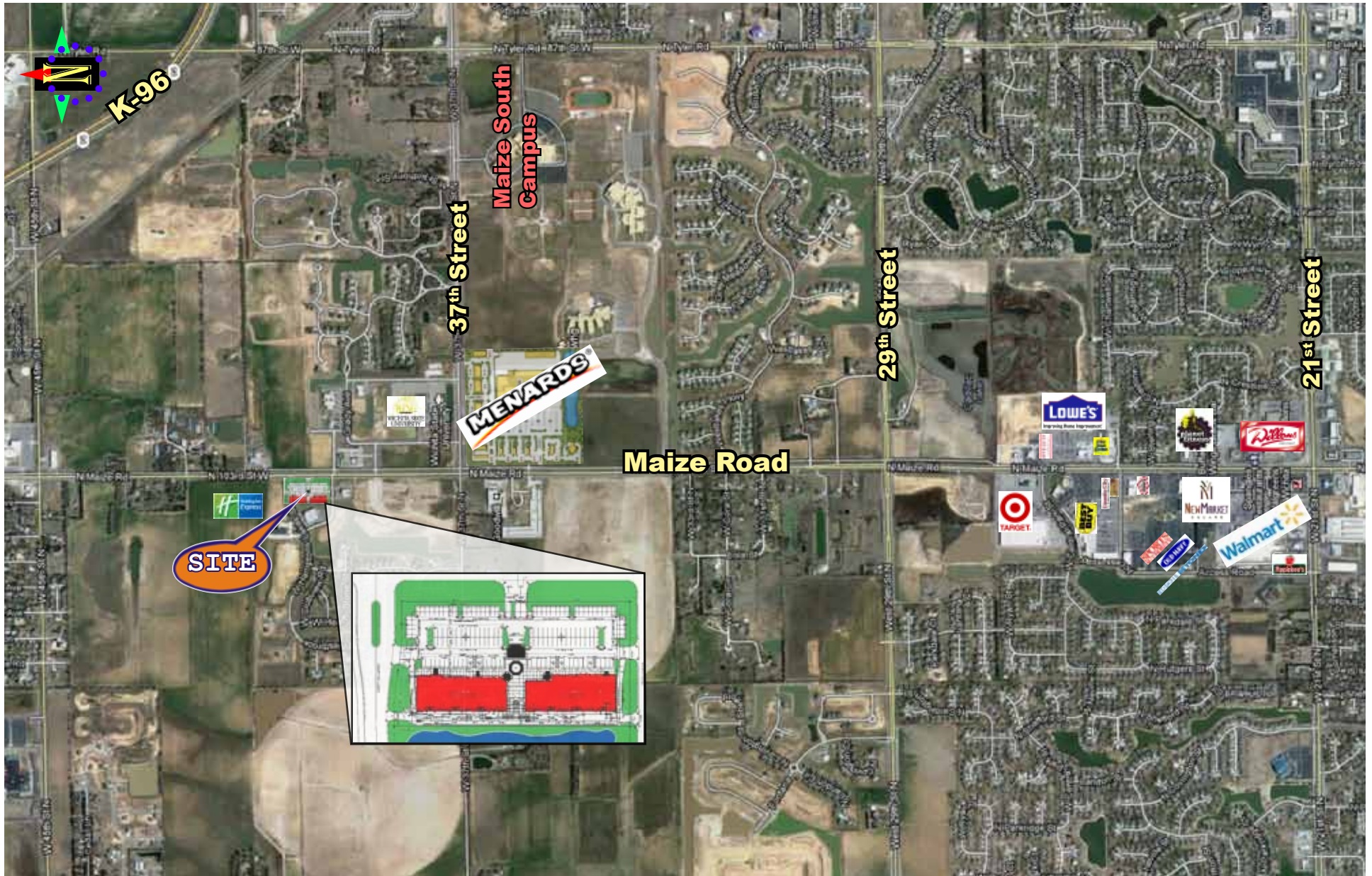


**High Traffic Retail Space Near New Menards
Close Proximity to Super Target / New Market Square
\$16.00 per sq. ft. NNN**

- 1,672 sq. ft. available immediately w/ drive thru
- Pre-Leasing 1,500 - 11,522 sq. ft. (under construction)
- Strong demographics & traffic counts
- Abundant parking
- Just north of New Market Square
- Excellent visibility on north Maize Road
- Area neighbors include; Super Target, Menards, Wal-Mart, Lowe's Home Improvement, Cinnamon's Deli, Five Guys Burgers, On The Border, Sports Authority, Bed Bath & Beyond, T.G.I. Friday's and many more.

For Information Contact: Curt Robertson (316) 618-1100
crobertson@insitere.com

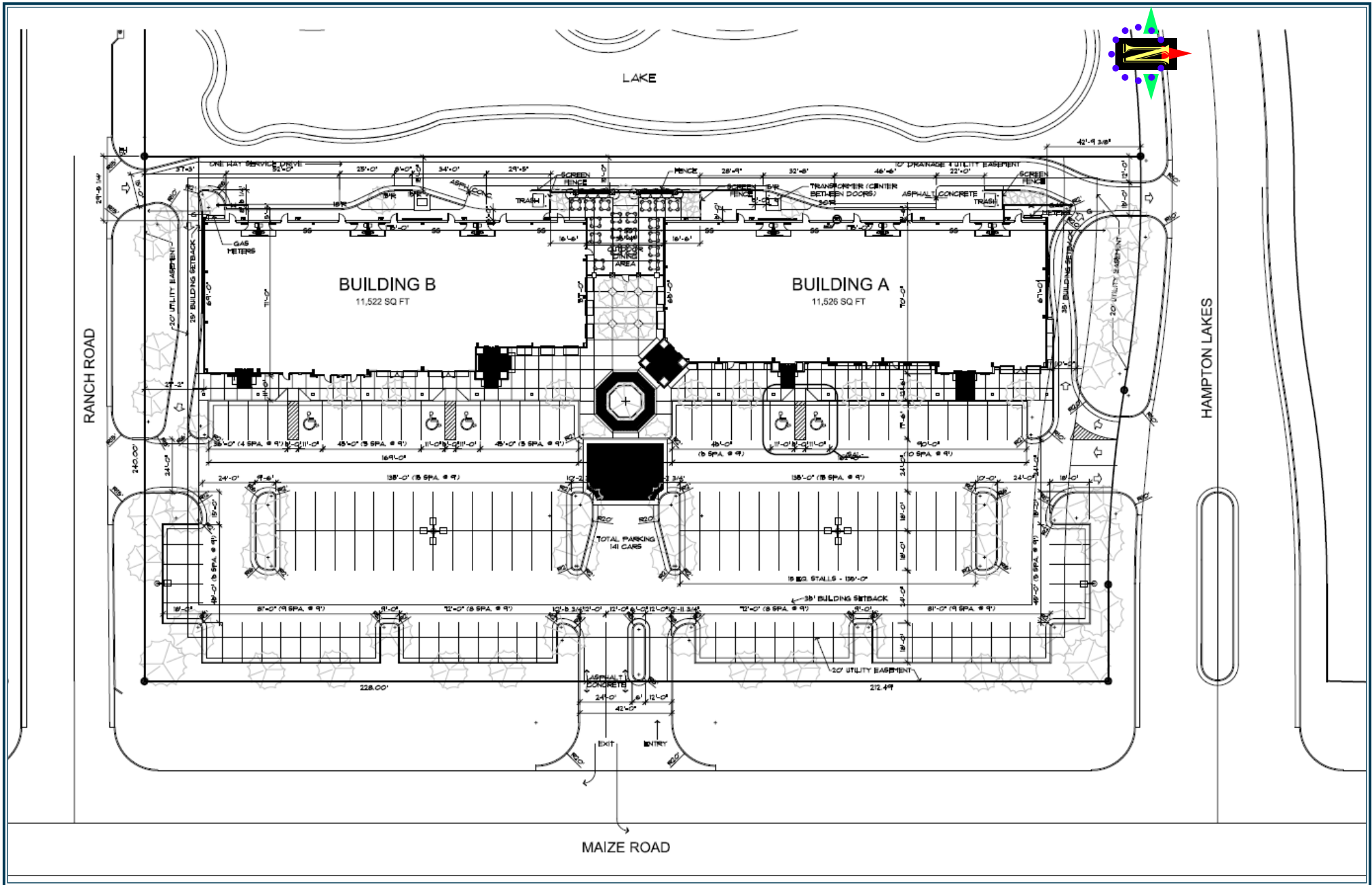




Hampton Lakes - Retail Space For Lease

4041 North Maize Road, Maize, KS

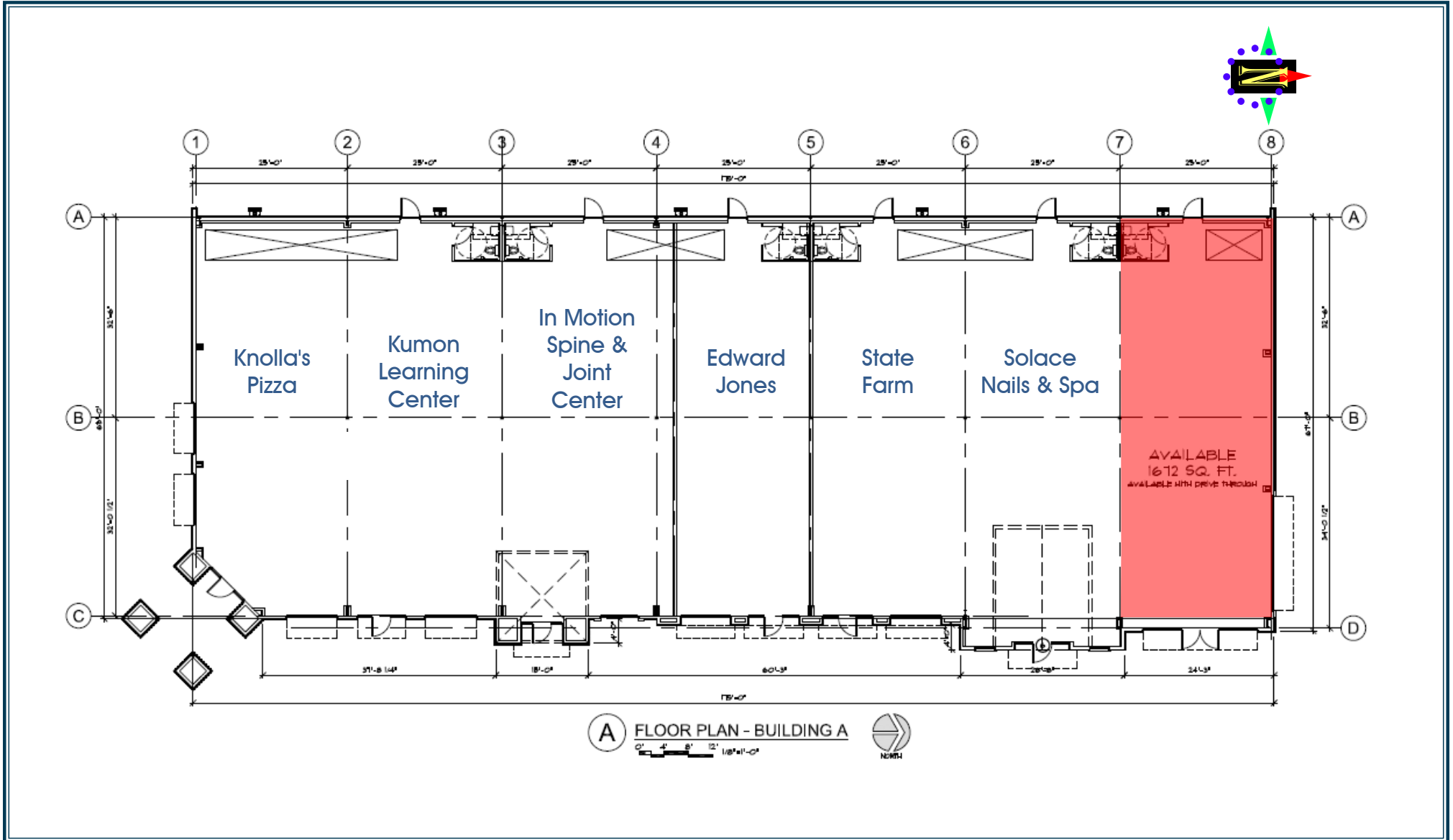
InSite
Real Estate Group



Hampton Lakes - Retail Space For Lease

4041 North Maize Road, Maize, KS





Hampton Lakes - Retail Space For Lease

4041 North Maize Road, Maize, KS

